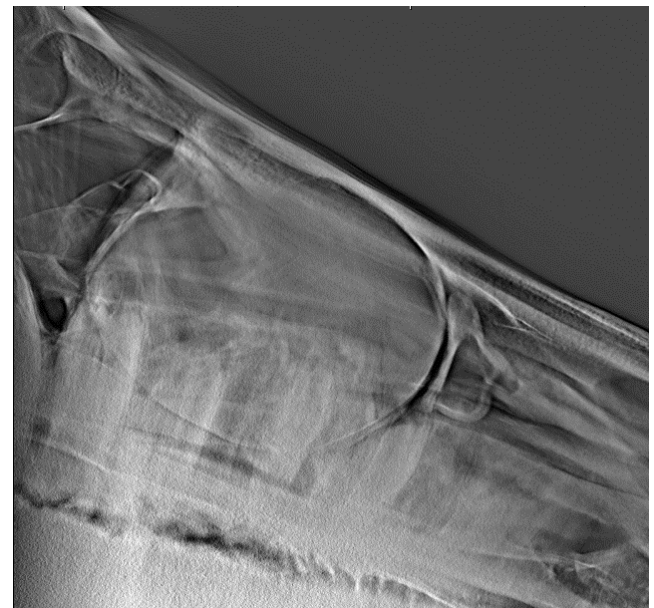
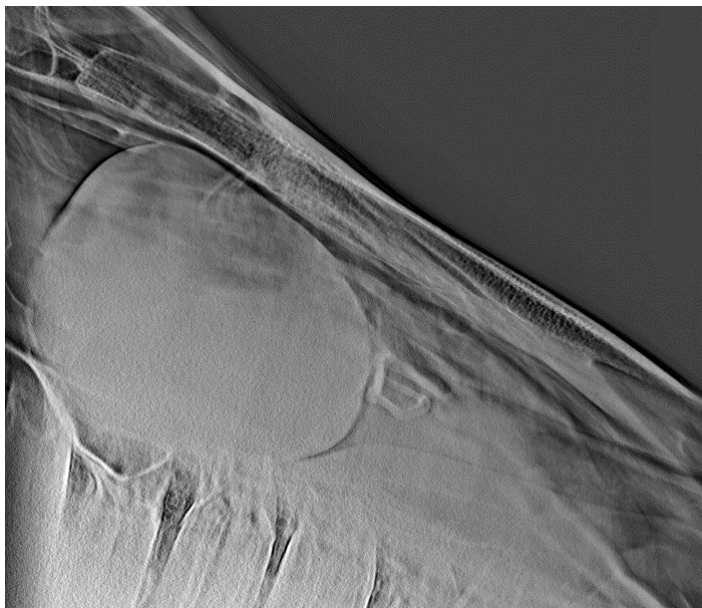
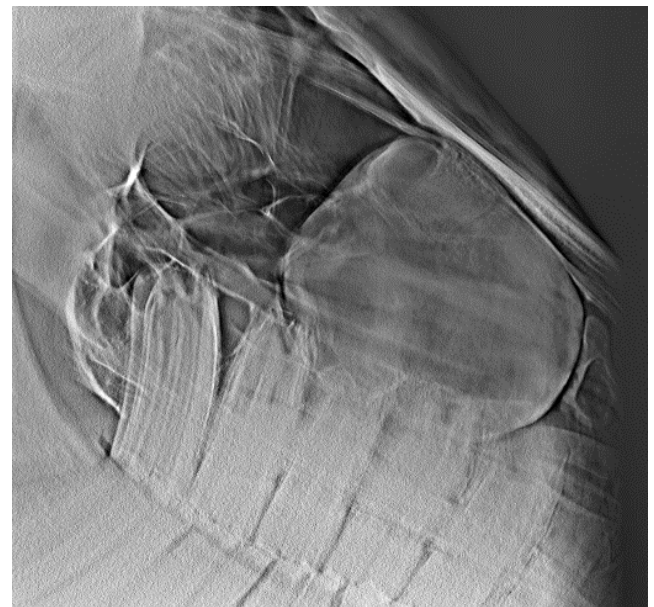
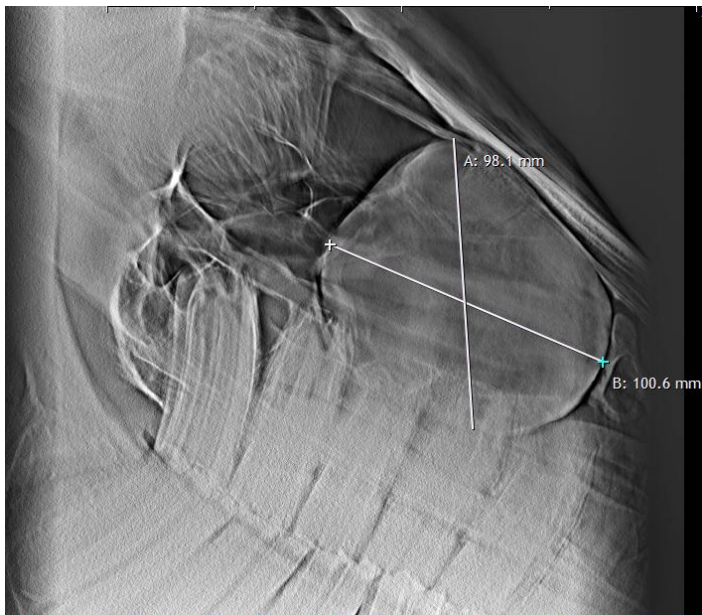


EQUINE TOMOSYNTHESIS

Head (B0024, 18 Dec 2019)

Indication for the use of horse head tomosynthesis was a progressive deformation of the front of the skull to the left in the region of the rostral maxillary sinus. No excretions from the left nostril were observed.

On the tomosynthesis layers in the cavity of the left maxillary sinus, a region of increased intensity is visualized, round in shape with a clear contour and a diameter of about 100 mm.



Diagnosis: Cyst of the left maxillary sinus.