

EQUINE TOMOSYNTHESIS

Navicular (S0032, 25 Jul 2019)

Five year old crossbred gelding. RF 2/5 lameness. Positive response (90%) to coffin joint block. Radiographs show obvious severe degenerative changes on navicular bone, especially on DP 45° view. An MRI of RF hoof was performed and concluded a final diagnosis of severe degeneration of navicular bone, moderate lesion of origin of impar ligament, adhesions on navicular bursa and insertional tendonitis of DDFT.

Tomosynthesis study allowed a clear visualization of the distal navicular bone avulsion associated to impar ligament's origin.



Fig 1. Tomosynthesis lateromedial and dorsopalmar views slices.



Fig 2. DR x-ray lateromedial and dorsopalmar views images.

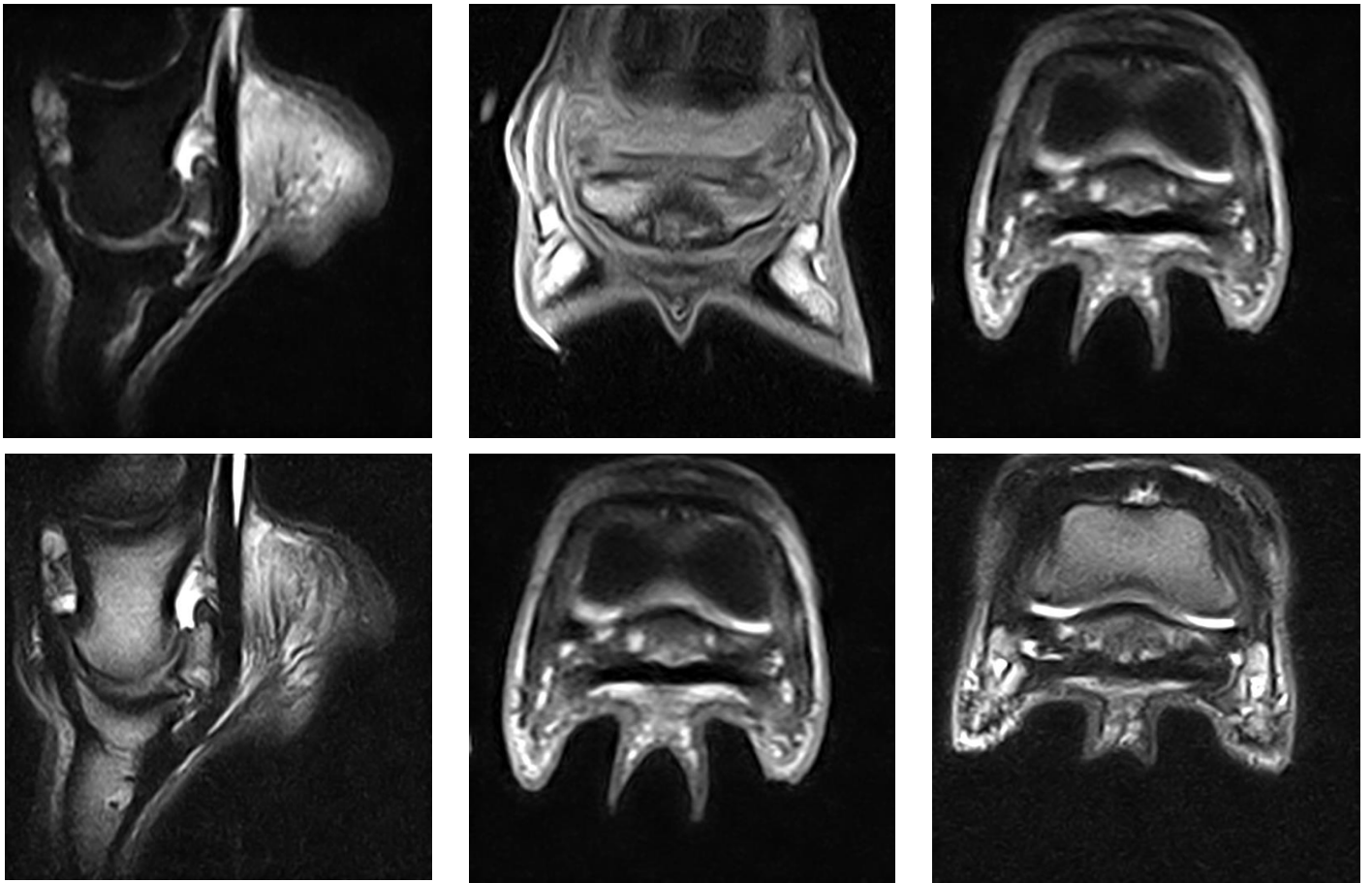


Fig 3. MRI images.