

EQUINE TOMOSYNTHESIS

Head (S0044, 22 Oct 2021)

Mare 19 years old, pleasure horse. The horse has been admitted to the clinic with a signs of the left maxillary sinusitis after 209 tooth repulsion one year ago. The passage of air through the left nostril is limited. The examination of oral cavity and teeth wasn't identifying abnormalities which cause the reason of sinusitis. The 209 tooth hole healed well after repulsion. The nasal endoscopy, X-rays and Tomosynthesis were performed.

Endoscopic findings: there was a narrowing of the nasal passages, an accumulation of purulent exudate, and an abnormal structure between the dorsal and ventral nasal conchas (Fig. 1).

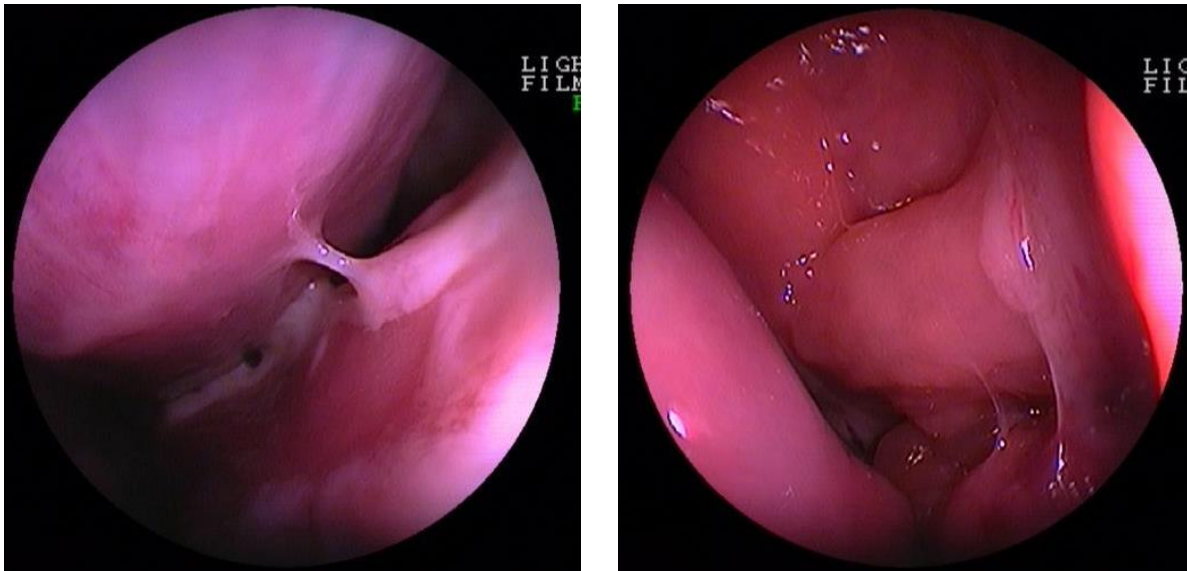


Fig. 1. The images of the left side nasal endoscopy of mare.

X-rays findings: On ventrodorsal view observed the soft-tissue opacity axial to the most caudal left cheek teeth and deviation of the nasal septum toward the right side. Left oblique view observed radiopacity in the left maxillary sinus area (Fig. 2).

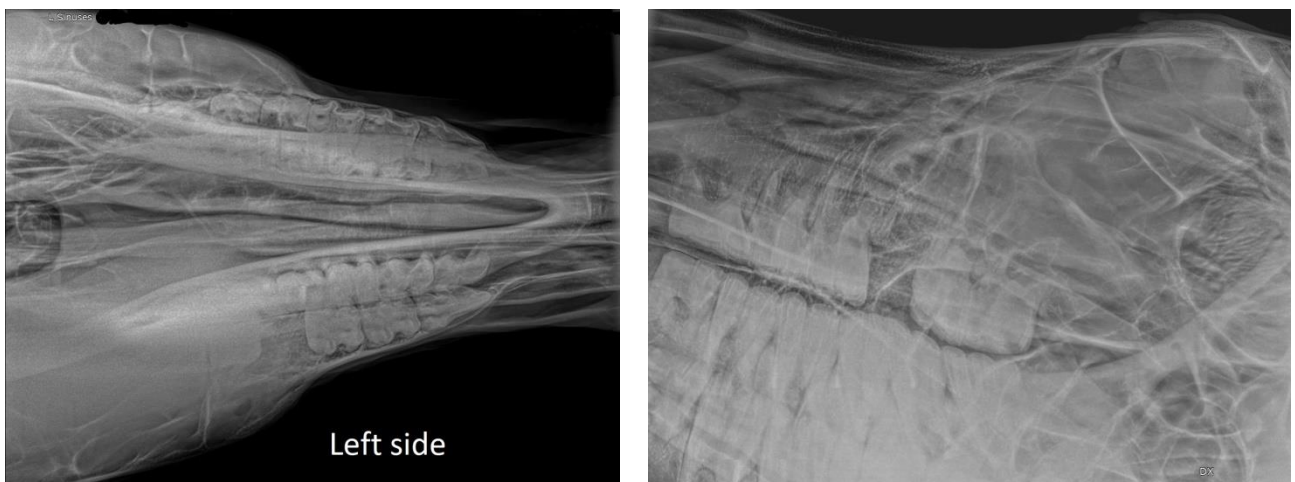


Fig. 2. X-rays views of the mare nasal tract and sinuses.

Tomosynthesis: On the tomosynthesis slice observed well-circumscribed radiopacity in the left maxillary sinus (Fig. 3).

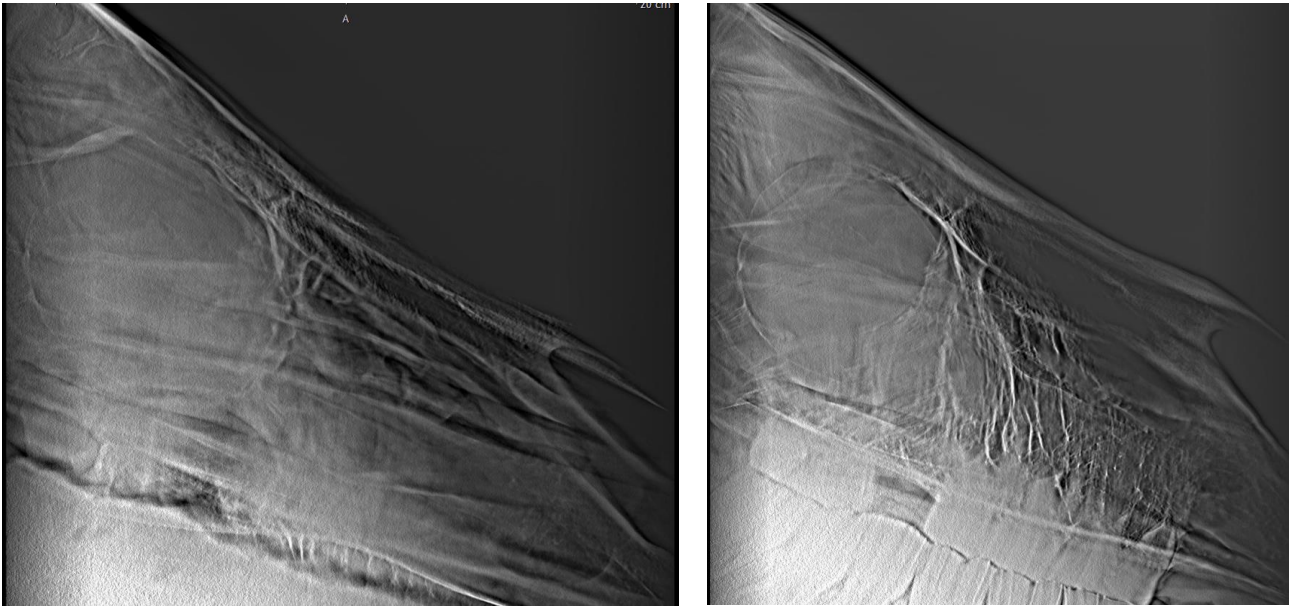


Fig. 3. The Tomosynthesis slices of the mare left nasal tract and maxillary sinus.

Diagnosis: Maxillary sinus cyst.

The surgery of the cyst removal through the nasofrontal and maxillary bone flap access was performed (Fig. 4).



Fig. 4. Cystic wall (white arrow).